

Warehouse Equipment Scissor Lift Tables



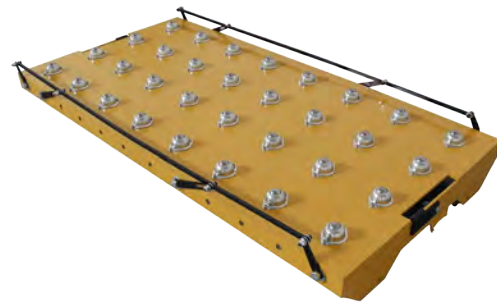
BHS Scissor Lift Tables (LT Series) vertically position materials at comfortable heights for improved ergonomics and productivity. Reduce physical strain, fatigue, and even injury by eliminating heavy lifting, bending, and reaching. Scissor Lift Tables are available in many standard sizes and capacities to lift and position loads weighing up to 6,000 lb (2722 kg) to heights up to 72" (1829 mm). BHS Scissor Lift Tables are ideal for a variety of applications such as work positioning, product assembly, order picking, machine feeding, and pallet loading.

FEATURES & BENEFITS

- Available in 2,000 lb, 4,000 lb and 6,000 lb capacity (907 kg, 1814 kg, and 2722 kg) with many table widths available
- Heavy-duty, formed steel construction for added reliability
- 230/460 V ac / 3 ph / 60 Hz power unit standard
- Contoured scissor legs for improved precision, travel, and stability
- Floor mounting tabs with 0.75" (19 mm) diameter holes (anchors and hardware not included)
- Maintenance chocks included to lock scissors
- Full width through pivot shafts for stability throughout the travel range
- Durable, sealed and shielded roller bearings for maximum capacity and longevity
- Durable powder coat finish with yellow tabletop to improve visibility and safety
- Closed hydraulic circuit
- Heavy-duty braided wire hydraulic lines for maximum burst strength and longevity
- Hardened chrome piston rod and honed cylinder provide added column strength and cylinder sealing
- Equipped with thermal overload protection and velocity fuses for additional safety
- Hydraulic components contained within the lift table for maximum safety, floor space, and convenience
- NEMA floor toggle switch included for easily accessible up/down function control
- Meets ANSI Standard MH29.1:2012 for Industrial Scissor Lifts



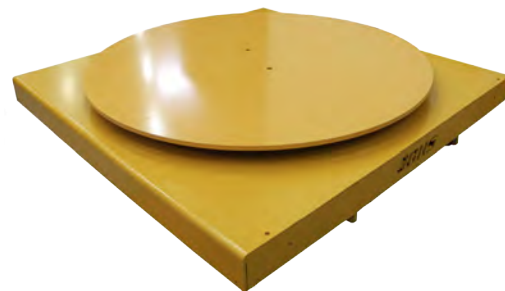
Accordian Skirt Guard (LT-ASG)*



Ball Transfer (LT-BT)*



Loading Ramp (LT-LR)*



Turntable (LT-TT)*

OPTIONS

Accordian Skirt Guard (LT-ASG)*

Encloses underside of lift table, protecting the lift mechanism from dirt and foreign objects

Ball Transfer (LT-BT)*

Tabletop attachment utilizes fixed ball transfers to easily maneuver a load or for integration with other handling equipment

Loading Ramp (LT-LR)*

Ramp matches platform width and lowered height of lift table to provide ground level accessibility

Roller Conveyor (LT-RC)*

Tabletop attachment utilizes rollers for integration with other handling equipment

Turntable (LT-TT)*

Tabletop attachment rotates 360° for positioning loads

* Option is bolted on for easy removal

MODELS & SPECIFICATIONS (IMPERIAL / METRIC)

Model	Capacity	Vertical Travel	Height		Platform		Power Unit			Shipping Weight
			Lowered	Raised	Width	Length	HP	Voltage	Elevation Time	
LT2K-24-48	2,000 lb 907 kg	35.5" 902 mm	8.5" 216 mm	44" 1118 mm	24" 610 mm	48" 1219 mm	1	230/460 V / 3 ph / 60 Hz	20 s	775 lb 352 kg
LT2K-36-48	2,000 lb 907 kg	35.5" 902 mm	8.5" 216 mm	44" 1118 mm	36" 914 mm	48" 1219 mm	1	230/460 V / 3 ph / 60 Hz	20 s	822 lb 373 kg
LT2K-48-48	2,000 lb 907 kg	35.5" 902 mm	8.5" 216 mm	44" 1118 mm	48" 1219 mm	48" 1219 mm	1	230/460 V / 3 ph / 60 Hz	20 s	867 lb 393 kg
LT4K-24-48	4,000 lb 1814 kg	35.5" 902 mm	8.5" 216 mm	44" 1118 mm	24" 610 mm	48" 1219 mm	2	230/460 V / 3 ph / 60 Hz	25 s	793 lb 360 kg
LT4K-36-48	4,000 lb 1814 kg	35.5" 902 mm	8.5" 216 mm	44" 1118 mm	36" 914 mm	48" 1219 mm	2	230/460 V / 3 ph / 60 Hz	25 s	822 lb 373 kg
LT4K-48-48	4,000 lb 1814 kg	35.5" 902 mm	8.5" 216 mm	44" 1118 mm	48" 1219 mm	48" 1219 mm	2	230/460 V / 3 ph / 60 Hz	25 s	876 lb 393 kg
LT6K-24-48	6,000 lb 2722 kg	35.5" 902 mm	8.5" 216 mm	44" 1118 mm	24" 610 mm	48" 1219 mm	2	230/460 V / 3 ph / 60 Hz	30 s	793 lb 360 kg
LT6K-36-48	6,000 lb 2722 kg	35.5" 902 mm	8.5" 216 mm	44" 1118 mm	36" 914 mm	48" 1219 mm	2	230/460 V / 3 ph / 60 Hz	30 s	840 lb 381 kg
LT6K-48-48	6,000 lb 2722 kg	35.5" 902 mm	8.5" 216 mm	44" 1118 mm	48" 1219 mm	48" 1219 mm	2	230/460 V / 3 ph / 60 Hz	30 s	885 lb 402 kg
LT6K-72-48	6,000 lb 2722 kg	35.5" 902 mm	8.5" 216 mm	44" 1118 mm	72" 1829 mm	48" 1219 mm	2	230/460 V / 3 ph / 60 Hz	30 s	1,220 lb 553 kg
LT6K-48-72	6,000 lb 2722 kg	35.5" 902 mm	8.5" 216 mm	44" 1118 mm	48" 1219 mm	72" 1829 mm	2	230/460 V / 3 ph / 60 Hz	30 s	1,220 lb 553 kg
LTD2.5K-24-53	2,500 lb 1134 kg	60.75" 1543 mm	11.5" 292 mm	72.188" 1834 mm	24" 610 mm	53" 1346 mm	3	480 V ac / 3 ph / 60 Hz	18 s	975 lb 442 kg

LT Model Number Legend

LT 2K-24-48

Series Capacity Platform Width Platform Length

